

SolarMax 660TS-SV / 720TS-SV Compact Station

The new outdoor solution



 **SWISS QUALITY**

Customer benefits :

- Light-weight outdoor solution for large PV projects
- Easy transport and quick installation thanks to compact design
- No concrete foundations needed due to a stainless steel floor. This means quicker commissioning
- Single or multi-MPPT operation for flexible dimensioning and high energy yields
- Optionally adaptable to the customers' needs
 - heating
 - filter system for dusty environments
 - own consumption transformer for additional electrical loads
- Only one transformer winding for two SolarMax TS-SV Compact Stations
- Project specific medium-voltage solutions


More than
20 years Swiss Quality
and Experience

 **SolarMax**[®]
 **SWISS QUALITY**

Specifications

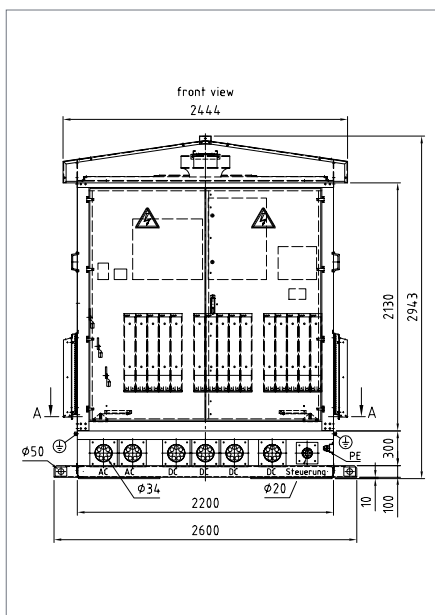


| | | SolarMax 660TS-SV Compact Station | SolarMax 720TS-SV Compact Station |
|---------------------|--|---|-----------------------------------|
| Input values | MPP voltage range | 450...800 V | 510...800 V |
| | Maximum DC voltage | 900 V | 900 V |
| Output values | Rated output power | 660 kW | 720 kW |
| | Nominal mains voltage | 3 x 280 V | 3 x 320 V |
| | Grid connection | Three-phase (without a neutral conductor) | |
| Efficiency | Maximum efficiency | 98 % | 98 % |
| | Europ. Efficiency ¹⁾ | 97.2 % | 97.4 % |
| Ambient conditions | Protection type | IP43 / IP33 | |
| | Ambient temperature range at rated power | -20 °C...+45 °C | |
| Weight & dimensions | Weight | ca. 3000 kg | |
| | Dimensions in mm (W x H x D) | 2200 x 2900 x 2000 mm | |
| Warranty | | Standard 2 years, project specific extensions | |

¹⁾ in Single MPPT operation with active partial load optimisation (see operating instructions parameter configuration with MaxTalk 2 Pro)

All rights, amendments and errors reserved.

View drawing



Application example

