

# AU-132MH

Topcon Technology

POWER RANGE

670W~700W

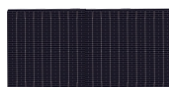
CELL SIZE

210\*105mm

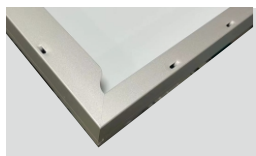


## JUNCTION BOX

Waterproof protection grade: IP68  
Safety Level: Class II  
Maximum System Voltage: 1500V  
outstanding waterproof level ·  
Effectively resist harsh environments



18BB



## Frame

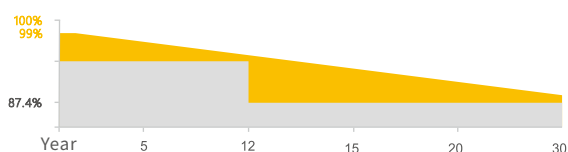
Strong mechanical load  
resistance up to 5400Pa  
Anodic oxidation layer resistant to  
chemical corrosion available  
in silver and black

## QUALIFICATIONS AND CERTIFICATES



· IEC61215 / · IEC61730

## WARRANTY



12  
YEARS

Guarantee on product material and workmanship

30  
YEARS

Linear Power output warranty



## SMBB Technology

Better light trapping and current collection to improve  
module power output and reliability.



## PID Resistance

Excellent Anti-PID performance guarantee via  
optimized mass-production process and materials  
control.



## Durability Against Extreme Environmental Conditions

High salt mist and ammonia resistance.



## Enhanced Mechanical Load

Certified to withstand: wind load (2400 Pascal) and snow  
load (5400 Pascal).

ZHEJIANG AUSTA GREEN ENERGY TECHNOLOGY CO., LTD

[www.austagroup.com](http://www.austagroup.com)

AUSTA ENERGY established in 2008, is a high-tech enterprise integrating R&D, production and sales of solar energy products. It is committed to the overall solution of distributed photovoltaic system and provides services from consulting, design, construction, financing to intelligent operation and maintenance.

AUSTA has 3 production sites in China and branches and representative offices in more than 10 countries overseas. Products include solar cells, modules, On/Off grid solar system, solar pump and other solar related applications. Our products have passed many international certifications such as TUV, MCS, CEC, IEC, ISO, CE, CQC and so on. With excellent quality, our products are exported to more than 100 countries of the world.

Since its establishment, AUSTA has always followed the idea of "Smart energy, Lightening future". It has followed the steps of "the Belt and Road Initiative", we bring bright light to the countries and people who are short of electricity. Sharing the concept of modern civilization, and building a green home together.

## ELECTRICAL DATA (STC)

Model Type	AU670-33V-MH	AU675-33V-MH	AU680-33V-MH	AU685-33V-MH	AU690-33V-MH	AU695-33V-MH	AU700-33V-MH
Peak Power(Pmax)	670.00	675.00	680.00	685.00	690.00	695.00	700.00
Maximum Power Voltage(Vmp)	39.52	39.72	39.92	40.12	40.32	40.52	40.72
Maximum Power Current(Imp)	16.96	17.00	17.04	17.08	17.12	17.16	17.20
Open Circuit Voltage(Voc)	47.42±3%	47.66±3%	47.90±3%	48.14±3%	48.38±3%	48.62±3%	48.86±3%
Short Circuit Current(Isc)	17.72±3%	17.76±3%	17.80±3%	17.84±3%	17.88±3%	17.93±3%	17.97±3%
Module Efficiency( % )	21.57	21.73	21.90	22.06	22.22	22.38	22.54

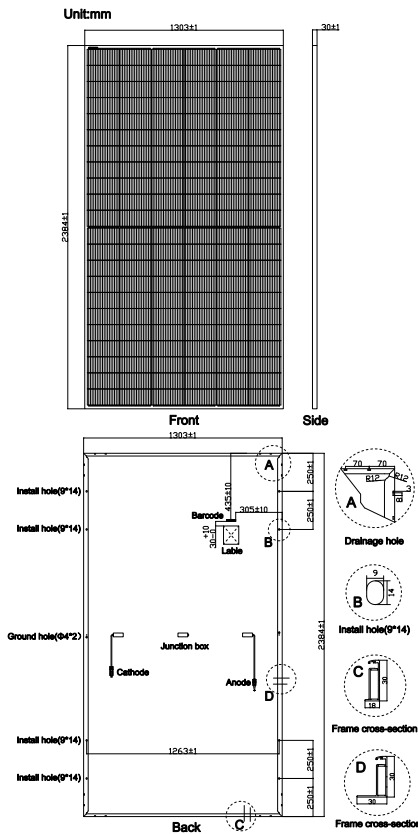
\* STC: irradiance 1000 W/m<sup>2</sup>, AM 1.5, and cell temperature of 25°C

## ELECTRICAL DATA(NMOT)

Model Type	AU670-33V-MH	AU675-33V-MH	AU680-33V-MH	AU685-33V-MH	AU690-33V-MH	AU695-33V-MH	AU700-33V-MH
Peak Power(Pmax)	508.00	512.00	516.00	520.00	523.00	527.00	531.00
Maximum Power Voltage(Vmp)	37.18	37.37	37.55	37.74	37.93	38.12	38.31
Maximum Power Current(Imp)	13.65	13.68	13.71	13.74	13.78	13.81	13.84
Open Circuit Voltage(Voc)	44.81±3%	45.04±3%	45.27±3%	45.49±3%	45.72±3%	45.95±3%	46.17±3%
Short Circuit Current(Isc)	14.12±3%	14.15±3%	14.18±3%	14.21±3%	14.25±3%	14.29±3%	14.32±3%

\* NMOT: irradiance 800 W/m<sup>2</sup>, AM 1.5, ambient temperature 20°C, wind speed 1 m/s

## PV DRAWINGS



## TEMPERATURE & MAXIMUM RATING

Maximum System Voltage (V)	1500 V
Maximum Series Fuse Rating (A)	30 A
Power Tolerance	0~+3 W
Pmax Temperature Coefficients (W/°C)	-0.240 %/°C
Voc Temperature Coefficients (V/°C)	-0.220 %/°C
Isc Temperature Coefficients (A/°C)	+0.047 %/°C
NMOT Nominal Module Operating Temperature (°C)	45±2 °C
Operating and Storage Temperature (°C)	-40~+85 °C

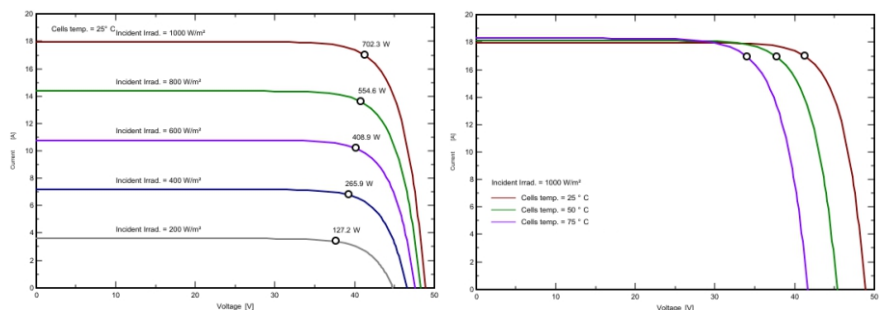
## MECHANICAL CHARACTERISTICS

Cell Type	210*105 N Type Mono
No. of Cells	132 (12*11)
Dimensions	2384*1303*30mm
Weight	33.90kg
Front Glass	3.2mm high transmission, low iron, tempered glass
Frame	Anodized Aluminium Alloy
Junction box	IP68 3diodes
Output cables	4mm <sup>2</sup> cable 35cm (Including MC4 connector)
MaxWind Load/Snow Load	2400Pa/5400Pa

## PACKING WAY

40HQ container	18 Packages/666pcs
----------------	--------------------

## IV CURVE (700W)



We Are Seeking Agents And Partners!

ADD: Floor 1, Building 7, No. 136, Haichuan Road, Jiangbei Area, Ningbo City, Zhejiang Province, P.R. China

Tel: 86-574-87915068

Call: 86-13566302808

E-mail: sales@austagroup.com

The company reserves the right of final interpretation, August 2022 edition

