



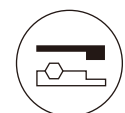
East-West Solution / Easy Installation /  
Component-Optimized / Less Expensive / CE Certified




East-West  
Solution




Easy Installation



Component-Optimized



Less Expensive



CE Certified

TP-7



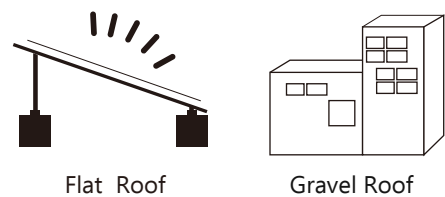
TECHNICAL DATA

Flat Roof Ballast System TP-7	
<b>Application</b> Flat roofs≤5°Concrete, Gravelled or Green Roofs Trapezoidal Sheet Metal Roofs With Continuous Mounting Rails	<b>Fastening Type</b> Concrete Ballasted And No Roof Penetration
<b>Module Frame Height</b> 25-50mm	<b>Module Orientation</b> Landscape
<b>Inclination</b>	10deg
<b>Material</b>	Aluminium EN AW-6005 T5 With 12-15um Anodization For Anti-Corrosion Fasteners A2 Quality Stainless Steel 304/410
<b>Standard</b>	Japan JIS C 8955:2011 ASCE 7-10 Malaysian Standard 1553-2002 BS EN 1991-1-4-2005

YEARS  
12  
WARRANTY

YEARS  
25  
SERVICE LIFE

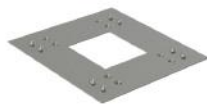
Application:



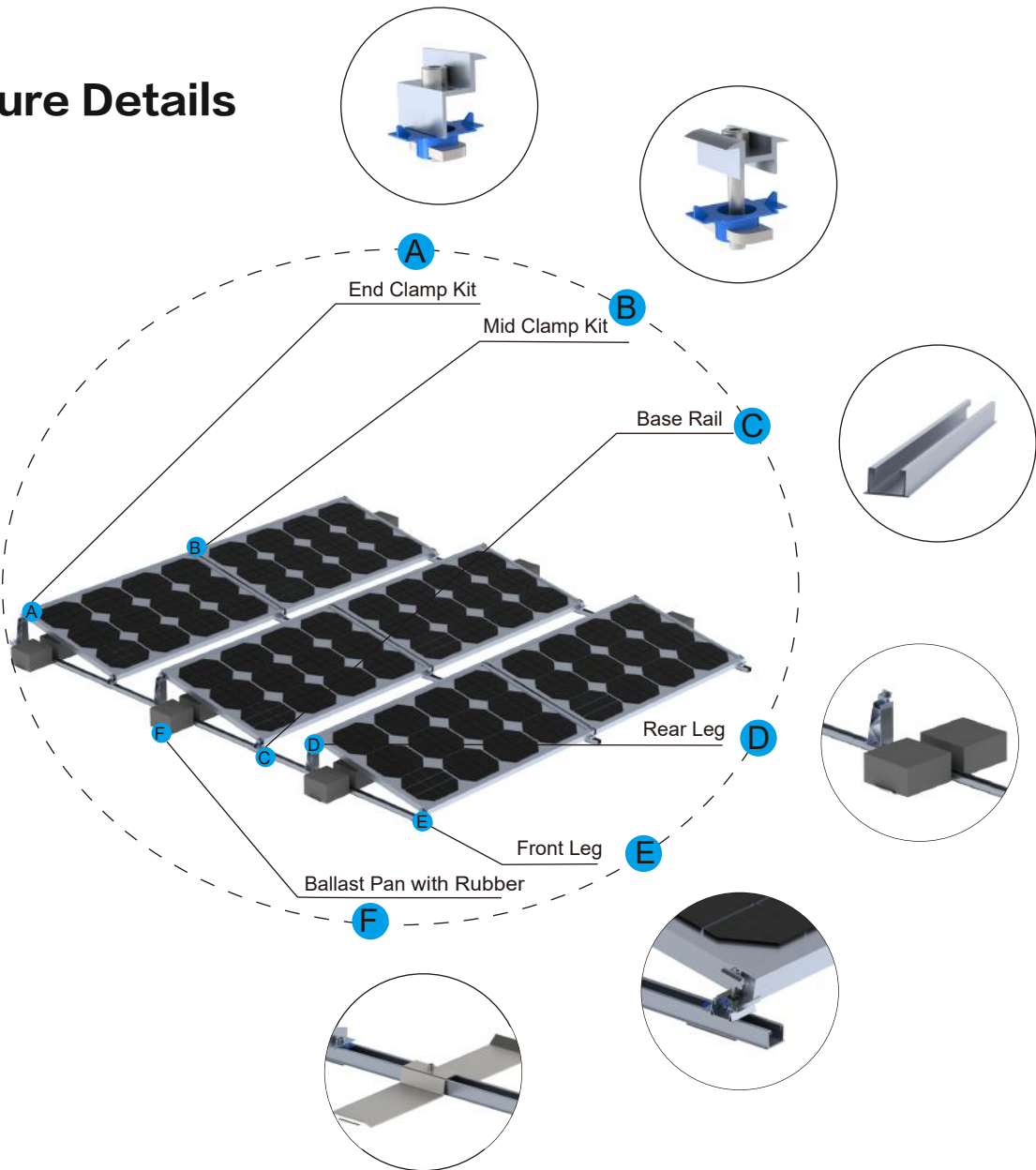
GROUNDING PARTS

Grounding Washer

YS-GW-01: Pierce anodization  
coatingthrough its teeth for  
electricity conductive.



Structure Details



South-Oriented Solution

