

FLEXIBLE

NENM410M-120

410Watt

MONO-FACIAL MODULE

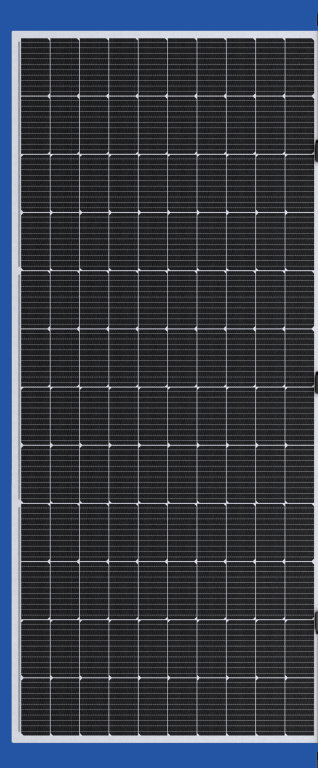
P-Type

IEC 61215, IEC 61730

ISO 9001: 2023 Quality management systems

ISO 14001: 2023 Environmental management systems

ISO 45001: 2023 Occupational health and safety management systems



Lightweight and ultra-thin design

The component weight is as light as 5.85kg and as thin as 3mm, meeting the requirements of various low load projects.



Efficient and reliable

It is improving the battery conversion efficiency. The power generation performance is excellent under low light conditions.



Ultra high flexibility

With ultra-thin silicon chip and advanced organic polymer materials, the component can perfectly fit various curved roofs.



Easy installation

Due to convenience and quickness, the costs of installation and transport are greatly reduced.

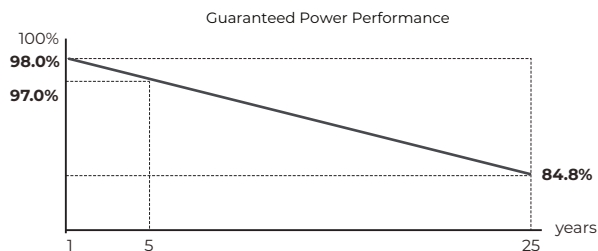


Customization

Products can be customized to meet the needs of different application scenarios.



LINEAR PERFORMANCE WARRANTY

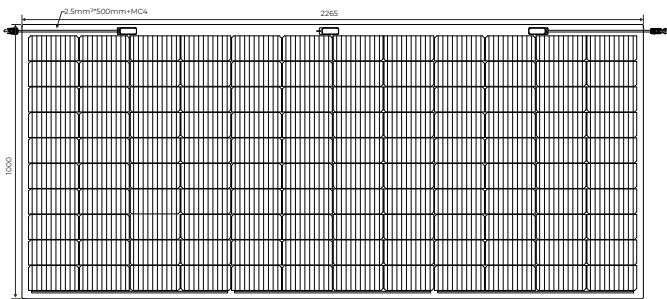


5 Year Product Warranty

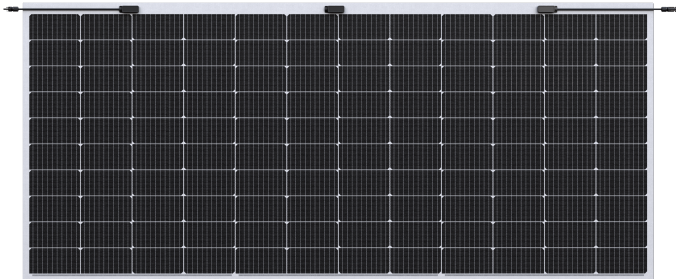
25 Year Linear Power Warranty

NENM410M-120

TECHNICAL DRAWINGS



Front



Product Image

*For detailed sizes and tolerance specification, please consult detailed module drawing

All black modules can be customized

Mechanical Characteristics(STC/NOCT)

Module Type	STC
Maximum Power (Pmax)	410W
Maximum Power Voltage (Vmp)	33.6V
Maximum Power Current (Imp)	12.2A
Open-Circuit Voltage (Voc)	40.5V
Short-Circuit Current (Isc)	13A
Module Efficiency (%)	/
Power tolerance	0~+3%
Maximum system voltage	1500DC
Maximum series fuse rating	15A

*STC(Standard Test Condition): Irradiance 1000W/㎡,Cell Temperature 25℃,Air Mass 1.5.
*NOCT(Normal Operating Cell Temperature: Irradiance 800W/㎡,Cell Temperature 25℃,Air Mass 1.5.

Specifications

Cell Type	Monocrystalline Silicon, 182*91mm
Cell Arrangement	120pcs(10*12)
Dimension	2265*1000*3mm
Weight	9.5kg±0.1
Frame	/
Junction Box	IP68
Cable	2.5mm²*500mm
Connector	MC4 compatible

Packaging Configuration

Dimensions	2265*1000*3mm	
Container	20'GP	40'HQ
Quantity / pallet	70	70
Pallets / cabinet	8	20
Quantity / cabinet	560	1400

TEMPERATURE COEFFICIENTS

Temperature coefficients of Pmax	-0.29 %/°C
Temperature coefficients of Voc	-0.25 %/°C
Temperature coefficients of Isc	0.045 %/°C
Operating Temperature(℃)	-40℃ ~ +85℃

Diagrams of Curve

