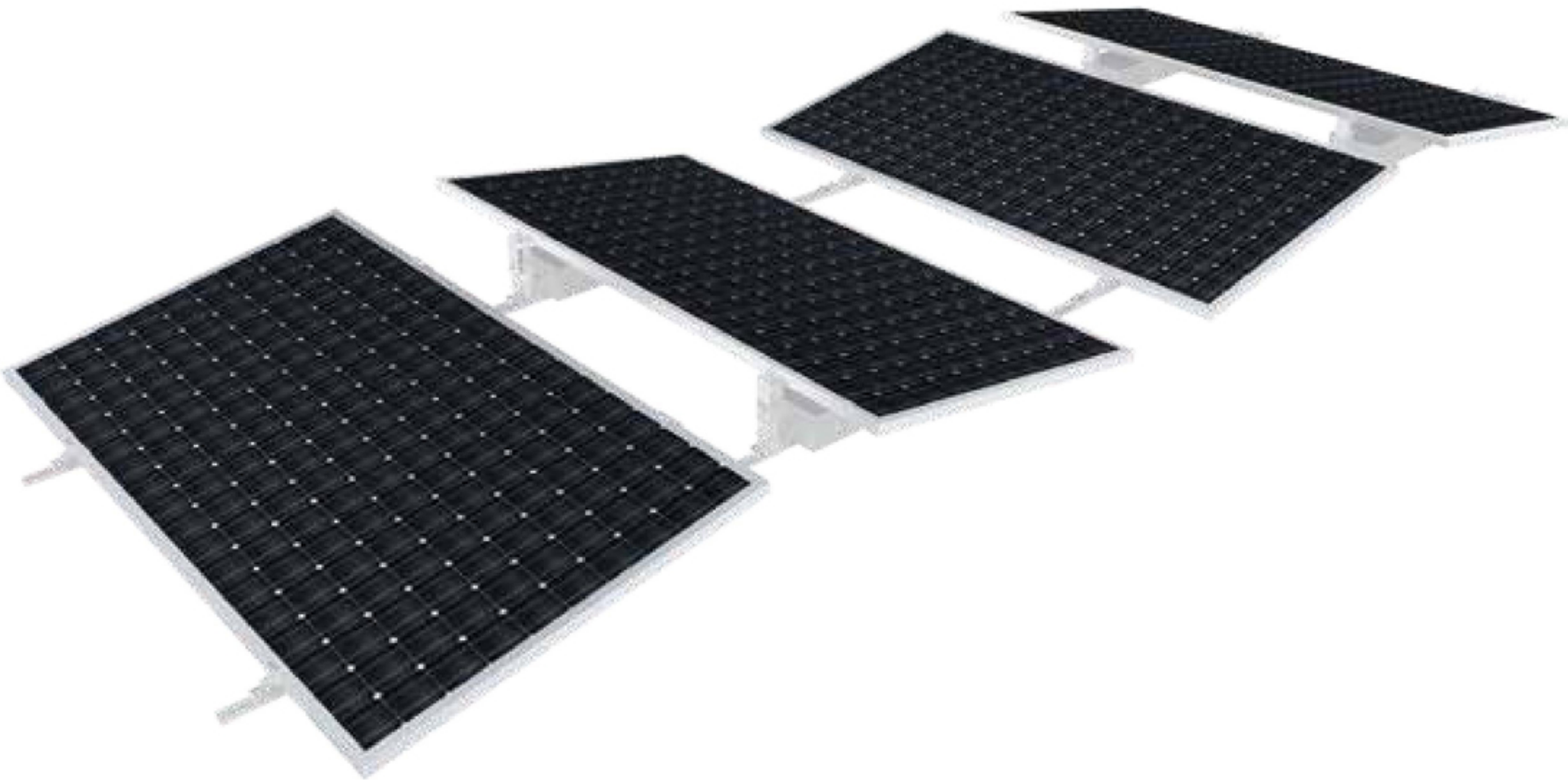


YIJIA

Ballasted Roof Solar PV Mounting System - East West/Two-Side



Technical Parameters

System Name	Matrix Solar Roof Mounting System	Design Standard	Euro Code/EN1991/1993/1994,BS 6399, ASCE 7-10
Installation Site	Flat Concrete roof, Flat ground,Membrane roof		International Building Code IBC 2009
Roof Type	Concrete Ballast		California Building Code CBC 2010
Tilt Angle	10°	Material	AL6005-T5(Anodized)
Wind Load	≤44m/s	Fastener	SUS304,Hot Dip Galvanized,Zinc-Nickel Alloy Electroplated Steel
Snow Load	≤1.6KN/m²	Small Components	AL6005-T5(Anodized)
Applicable Solar Module	Framed/Frameless,Any Width Panel	Color	Silver or Customized
Panel Layout	Landscape	Warranty	10-Year Warranty

Overview

Matrix Solar Roof Mounting System is a non-penetration solution for flat rooftop, to meet different tilt angles installation. it is applicable to the roof areas with medium wind load. Quick installation and stable structure are assured by modular patented design.

Modular Design



Adbantages

High Durbility Ensure the Structure Strength

Professional structure design and high-density aluminum material ensure the stability and strength of the structure

Unique Matrix Design

The matrix design further assures the stability of the whole system, and flexibly compatible with concrete block or ballast foundation

Reasonable Installation and Package Design

Simplified components configuration lead to quicker installation and smaller package size, saving installation cost and freight

Structure



Componet Details

1



Rail connection

Material: AL6005-T5(Anodized)

2



Front Support Plate (Nut)

Specification: L50  
Material: AL6005-T5(Anodized)

3



Rear Support Plate(Upper) (10°)

Specification: L50  
Material: AL6005-T5(Anodized)

4



Rear Support Plate(Upper) (10°)

Specification: L50  
Material: AL6005-T5(Anodized)

5



C Clamp Kit

Comonents: C Clamp  
Cross Module  
Spring Washer M8  
Hex Socket Head Bolt

6



End Clamp Kit

Comonents: End Clamp  
Spring Washer M8  
Hexagon Socke Bolt

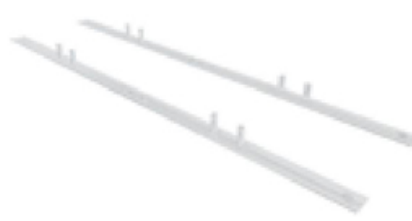
Installation Guide

1



Put the GM Rail

2



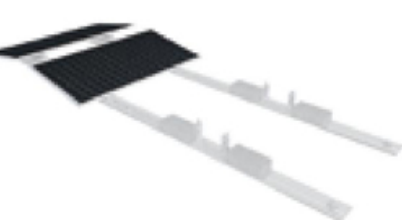
Install the support plate.

3



Put the cement pier.

4



Install the module

5



Complete installation