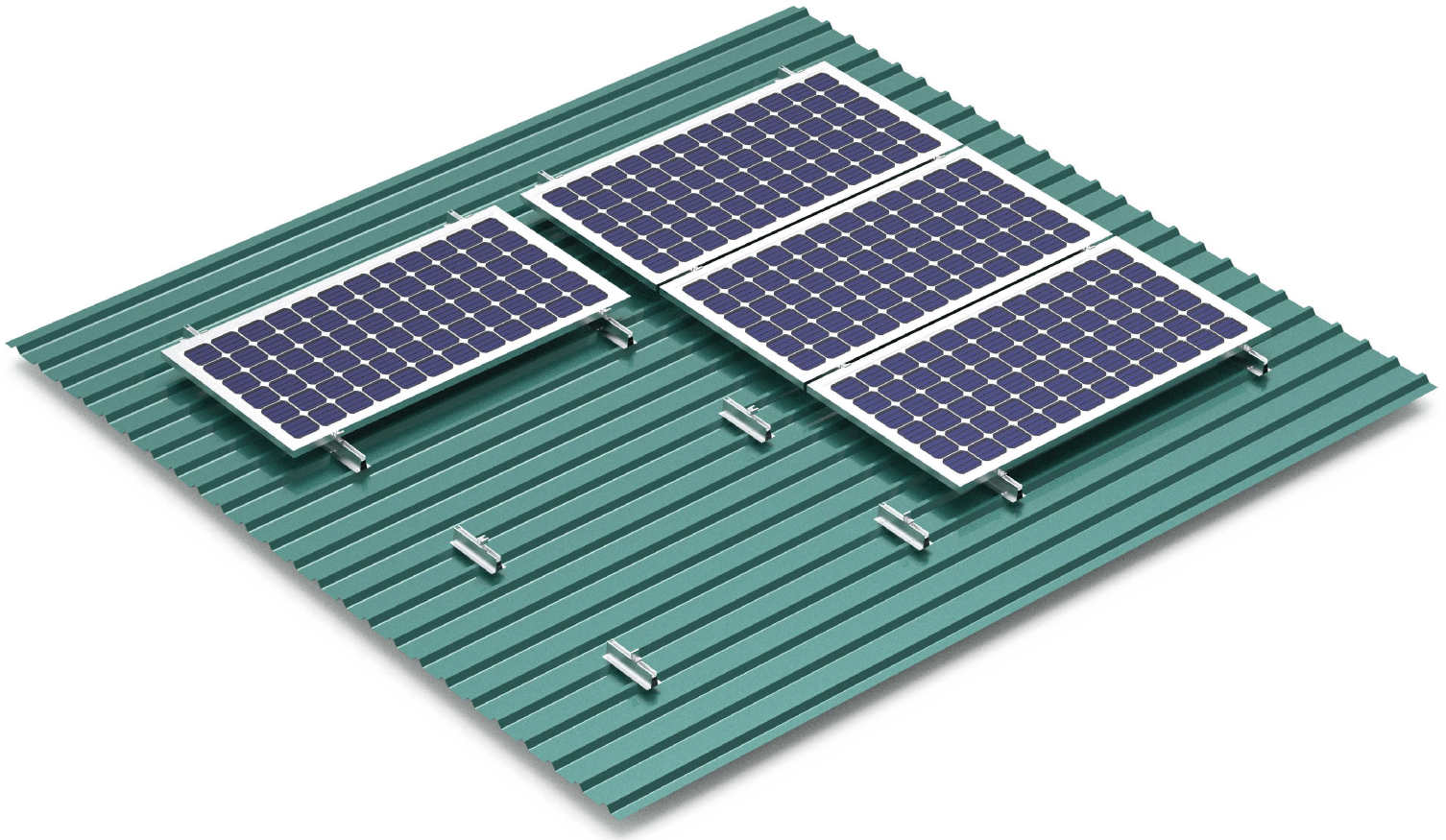


MONO RAIL SYSTEM



Discover the convenience of solar mounting with our range of mono rail solutions. Mono rails are the most preferred system for trapezoidal and corrugated sheet metal, owing to their hassle-free installation process, without the need for time-consuming fixing in the roof substructure. Our range can comfortably be installed on pitched roofs ranging from 5 to 75°. Rails are available in customized lengths to accommodate various load and insulation requirements.

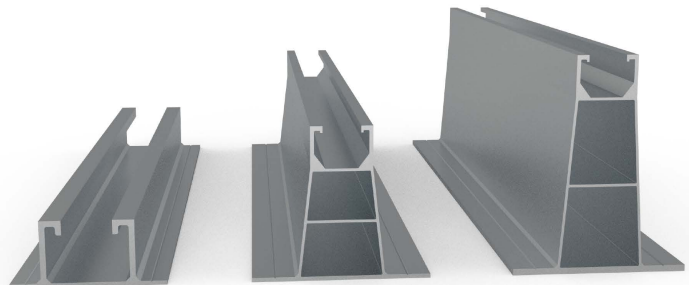


Highlights:

- Optimum load distribution on trapezoidal sheet
- Fewer components - quick & easy installation
- Compatible with all PV module
- Efficient space utilization

General Guidelines:

- Suitable for sheet thickness $\geq 0.4\text{mm}$ (Steel)
 $\geq 0.5\text{mm}$ (Aluminium)
- Suitable crest length $\geq 22\text{mm}$
 $\leq 300\text{mm}$ (customizable)
- Flush area surrounding the bore hole: $\geq 20\text{mm}$
- Use EPDM for leakage & electrostatic prevention



Mono Rail Dimensions:	Raw Material Used:
Height: 30, 70 & 100 mm	Aluminium 6063-T6
Length: Customizable	SS 304
Available in Anodized/Non-Anodized finishes	