

### WDR SERIES ROOF BALLAST MOUNTING(EAST-WEST)

#### Features:

Applicable for various modules;

Various tilt angles designed for specific projects;

Easy & fast installation;

Ballast blocks applied without damage of rooftop, thermal insulation achieved; for penetration-allowed rooftops, fixing with expansion/ chemical bolts.



#### Main Specification

Installation Site	Flat Roof	Body Material	Aluminum-6005-T5
Tilt Angle	0-45°	Bolt Material	SUS304
Max Wind Force	≤ 60m/s	Base Material	Q235/Cement
Snow Load	≤ 1.4KN/m²	Surface Treatment	Anodized
Module Directions	Landscape	Warranty	10 Years
Foundation	Ballast Concrete		

Design Standard AS/NZ 1170,JIS C8955 2017,DIN 1055 ,IBC 2006

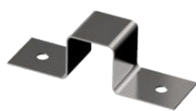
#### Installation Photos



Mid Clamp



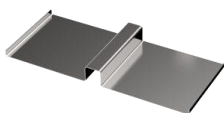
End Clamp



End-Clamp



Expansion Bolt



Ballast-Plate



Rail



Front Base



Back Support