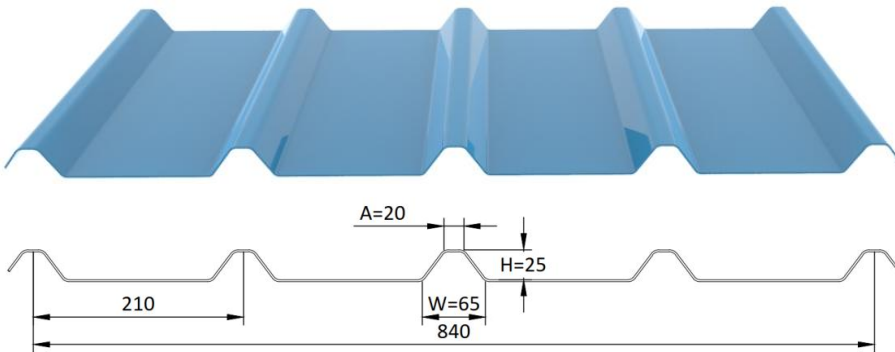
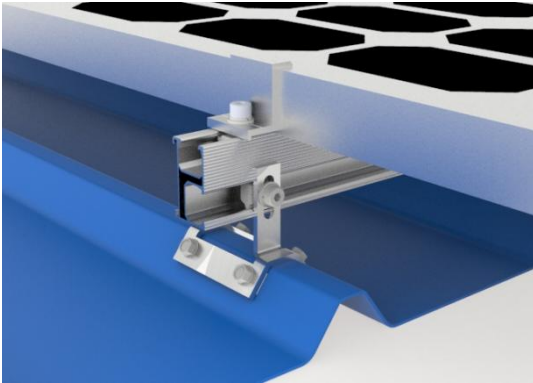


Trapezoidal Metal Roof Clamps



Technical Information

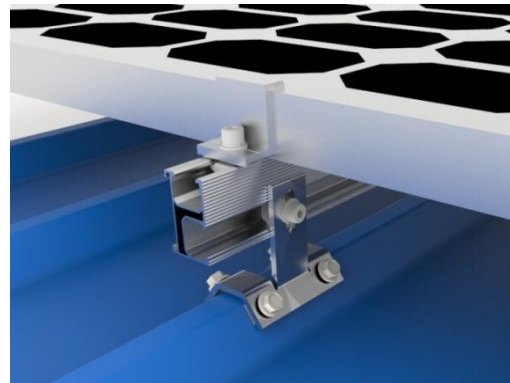
- Material: SUS304 & EPDM
- Application: Trapezoidal Metal Roof
- Fixed Way: Using self-tapping screw to fix the clamps on the roof



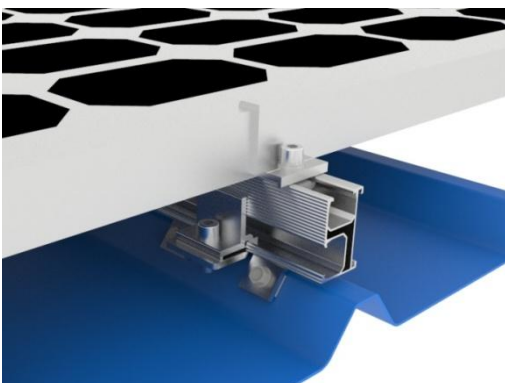
MG-SS-MRC-01



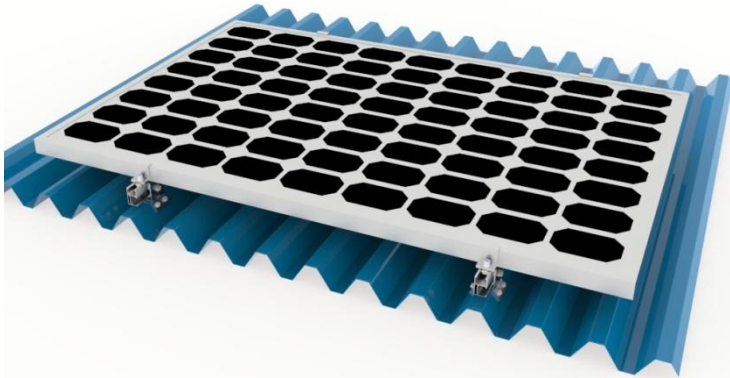
MG-SS-MRC-01-A



MG-SS-MRC-01-B



Trapezoidal Metal Roof Clamps



Technical Information

- Material: AL6005-T5 & EPDM
- Application: Trapezoidal Metal Roof
- Fixed Way: Using self-tapping screw to fix the clamps on the roof
- Custom made available for different metal roof

Horizontal Solution



MG-AL-MRC-01



Vertical Solution



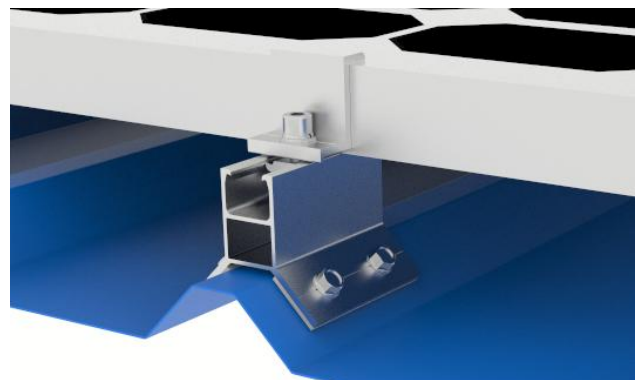
MG-AL-MRC-02



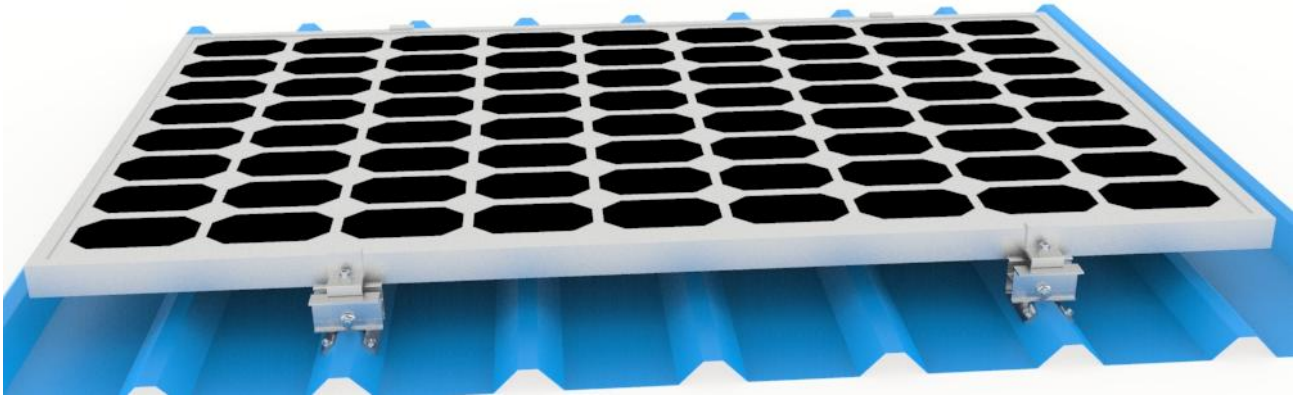
Horizontal & Rail-less Solution



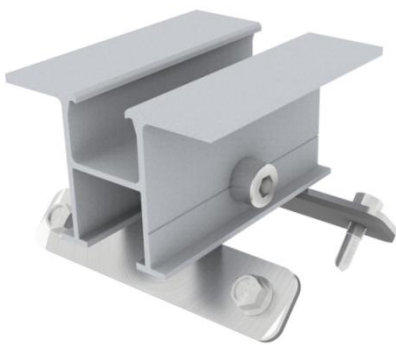
MG-AL-MRC-03



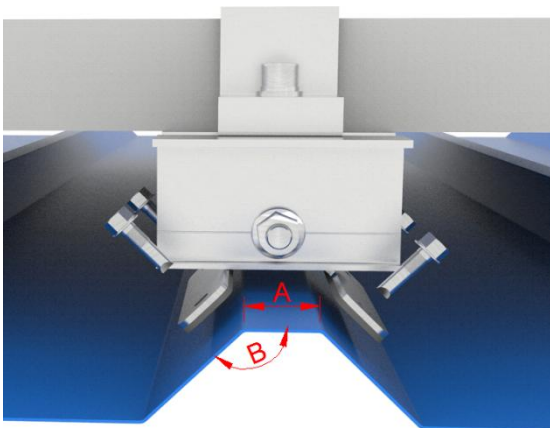
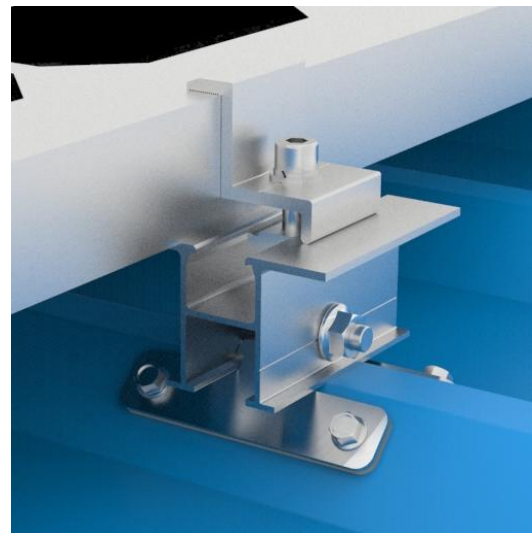
Universal Metal Roof Clamp



Universal Roof Clamp can work with all kinds of trapezoidal metal roof. It is a rail-less solution, it will help you save some cost and labor cost. Use anti-aging EPDM rubber to improve the waterproof performance. The material of this product is made by aluminum alloy (AL 6005-T5) and stainless steel 304 (SUS 304), which has strong corrosion resistance.



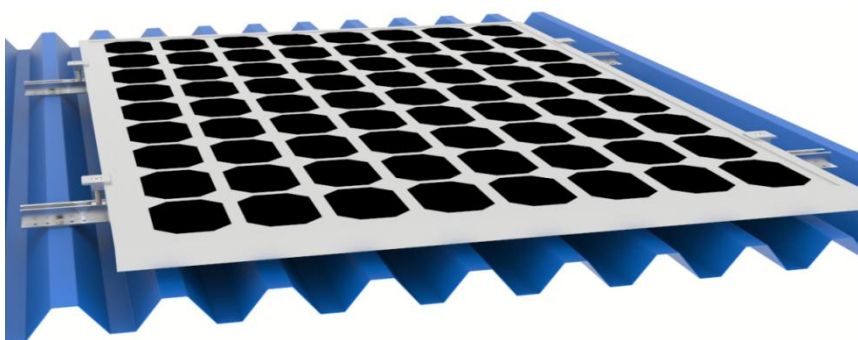
MG-UM-RC
Universal Roof Clamp



Metal Roof Sheet Specification

	Min.	Max.
A	20 mm	60 mm
B	90 degree	140 degree

Mini Rail Series

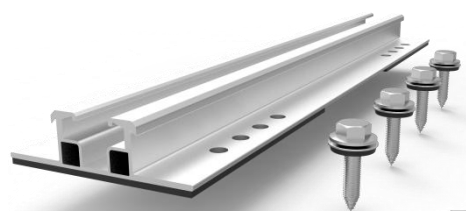
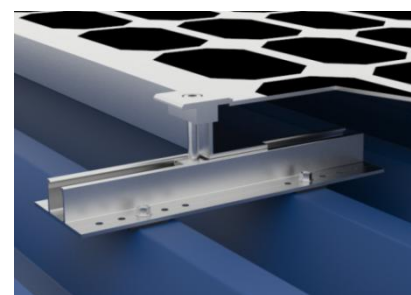
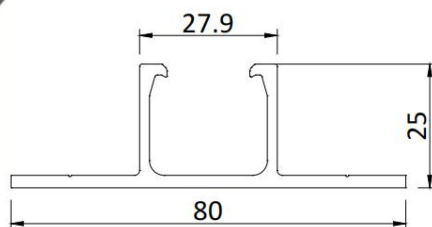


This type mini rail can work with all kinds of trapezoidal metal roof. It was made by aluminum alloy, which has strong corrosion. For this solution, it can save at least 80% cost and 50% installation time.

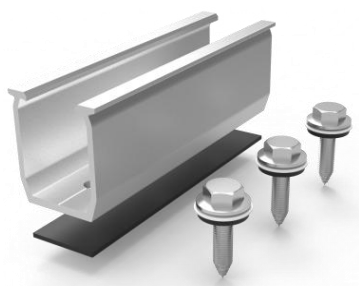
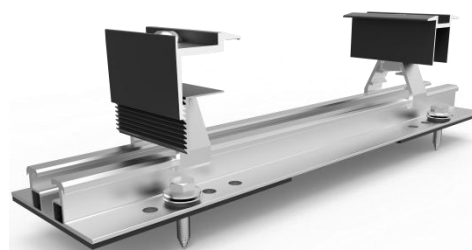
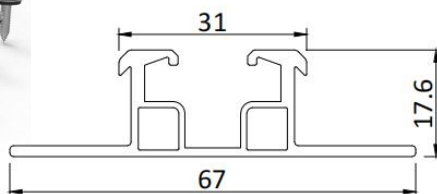
Common use length of mini rail: 250mm, 300mm, 350mm and 400mm.



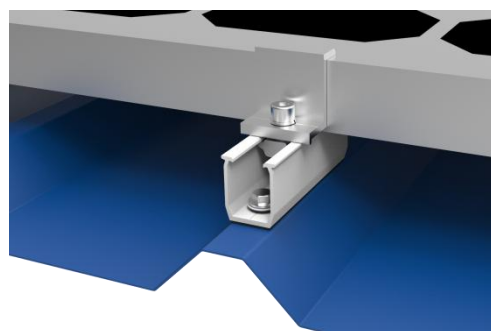
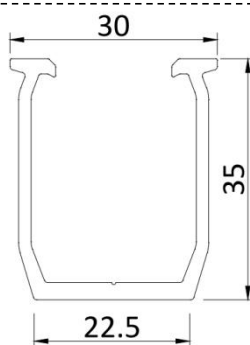
MG-AL-MRC-04
Vertical & Rail-less Solution



MG-AL-MRC-04-B
Vertical & Rail-less Solution

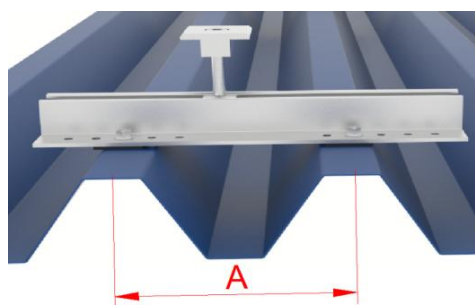


MG-AL-MRC-04-C

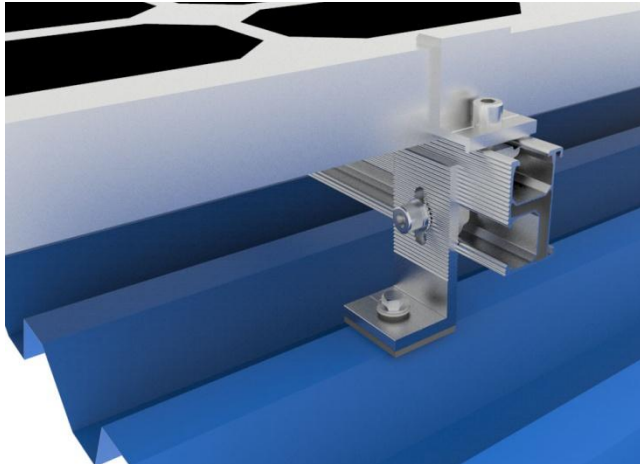


Metal Roof Sheet Specification

LENGTH	Distance	Min.	Max.
250mm	A	80mm	220mm
300mm	A	130mm	270mm
400mm	A	230mm	370mm



L Foot Mount



L Foot mount have been widely used on universal corrugated metal sheet roof. It also can fix to the roof rafter directly.

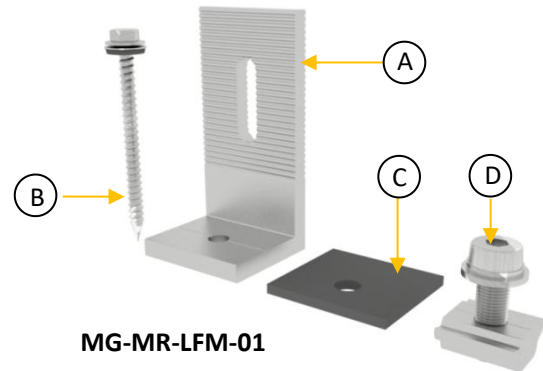
Plus, it can be applied with all kinds of hanger bolt and roof clamps.

Features

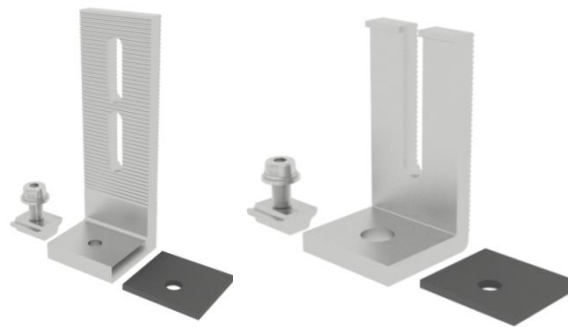
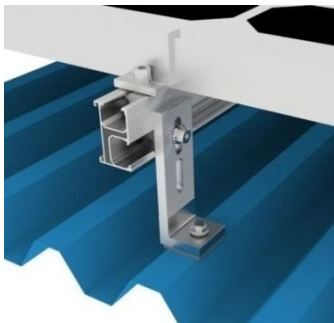
1. Simple and cost-effective installation
2. Material: Aluminum 6005-T5 & SUS 304
3. Waterproof rubber gasket integrated
4. Apply for many kinds of metal roof

Components List

Components	Quantity
A. L Foot Mount	1
B. M6.3x80mm wood screw	1
C. Rubber Gasket	1
D. M8X25 SUS 304 bolt& rail nut & SUS washer	1

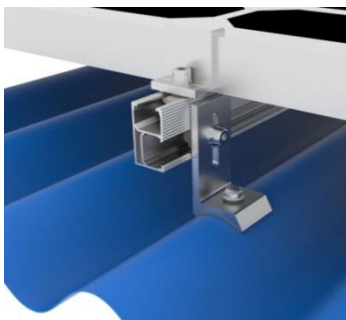


Specification

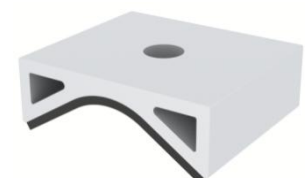
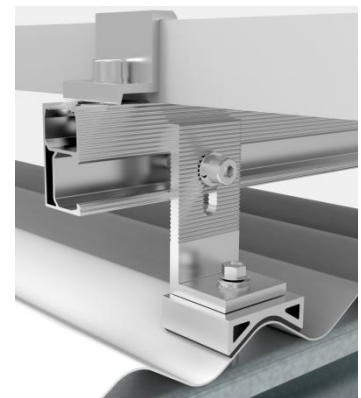


MG-MR-LFM-02

MG-MR-LFM-03



MG-MR-LFM-04



MG-AD-C

Adapter for Corrugated Metal Roof

Hanger Bolt Mount



MG-MR-HB

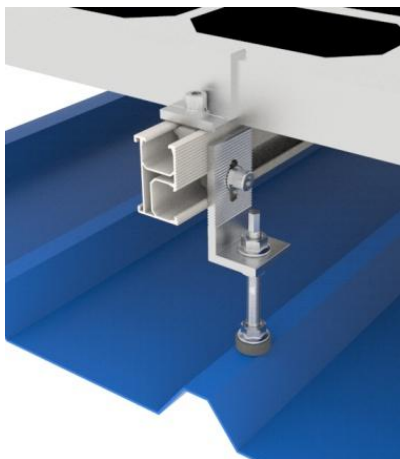
MG-MR-HB-S

Hanger Bolt apply to install on both wooden rafter and steel purlin. Both types can be applied with L Foot and plate. There are three sizes most common use, M10x200mm, M12x200mm and M12x300mm Hanger bolt.

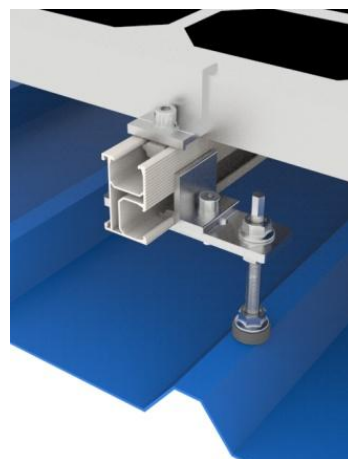
Features

1. Fast and simple installation
2. Made of SUS 304
3. Highly corrosion resistant surface treatment
4. Waterproof EPDM rubber integrated
5. Wooden rafter and steel purlin options

Hanger Bolt Mount Series



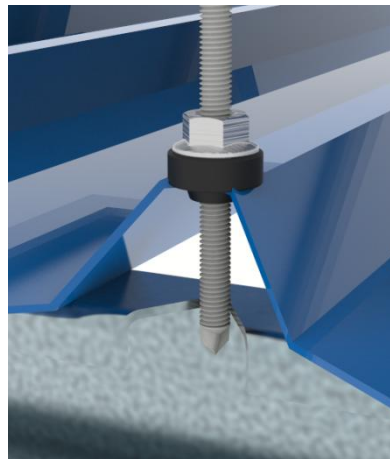
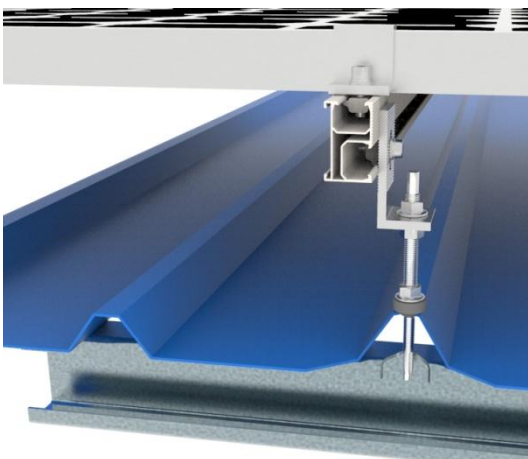
MG-MR-HB-01



MG-MR-HB-02



Application



MG-MR-HB-S-01